



Welcome

Virtual Public Hearing
Shepherd and Durham Major Investment Project
CSJ: 0912-72-607
January 14, 2021

January 14, 2021



Introduce Project



Present the Preferred Alternative



Obtain Feedback on the Preferred Alternative



- Welcome
- Project Overview
- Environmental Overview
- Project Next Steps
- Public Comment Process
- Adjourn



Please phone 832-429-6237 if you have:

- Problems accessing public hearing information online
- Requests for special accommodations
- Language or interpretation needs other than English and Spanish

Discussion with project staff will not be included in the official record of the public hearing.

HOW CAN I MAKE COMMENTS?



All verbal and written comments must be received or postmarked by **January 29, 2021.**

Submit comments:

- Verbally by phoning 832-429-6237 and leaving a voice mail message
- In writing online by using the web comment form link in the Public Comments section at: memorialheightstirz5.com/projects/shepherd-and-durham-major-investment-project
- By email to: Comments@memorialheightstirz5.com
- By mail to: 1980 Post Oak Blvd., Suite 1380 Houston, TX 77056

Responses to verbal and written comments received by **January 29, 2021** will be available online at memorialheightstirz5.com/projects/shepherd-and-durham-major-investment-project once the final report has been approved.



TxDOT changed the traditional in-person public hearing
to an online format in response to the
COVID-19 outbreak

This virtual public hearing and information on MHRA's
project website provides the same information as
an in-person hearing would have including:

- » Project information
- » Recorded presentation
- » Proposed schematic
- » Estimated project timeframe
- » Process for submitting comments
- » Key contacts

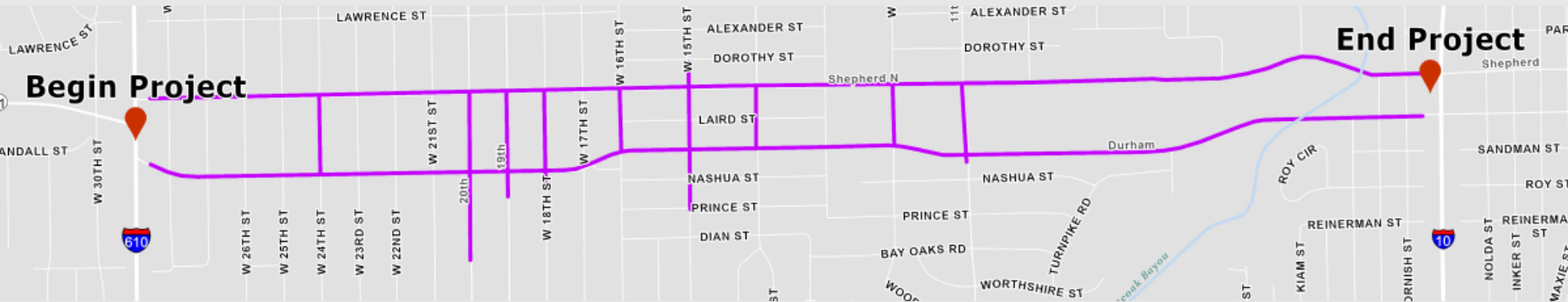
National Environmental Policy Act (NEPA) Assignment to the Texas Department of Transportation

The environmental review, consultation, and other actions required by applicable Federal environmental laws for this project are being, or have been, carried-out by TxDOT pursuant to 23 U.S.C. 327 and a Memorandum of Understanding dated December 9, 2019, and executed by the Federal Highway Administration and TxDOT.

- Virtual Public Hearing Notices were published in:
 - The Houston Chronicle on December 30, 2020
 - La Voz on December 27, 2020
 - The Leader on December 26, 2020
 - Community Impact on January 8, 2021
- Elected Official Letters were e-mailed on December 17, 2020
- Notice was posted to the TxDOT website on December 23, 2020
- Notices were mailed directly to adjacent property owners on December 21, 2020
- Information was posted on the Memorial Heights Redevelopment Authority website beginning in November 2020

PROJECT OVERVIEW

SHEPHERD AND DURHAM MAJOR INVESTMENT PROJECT



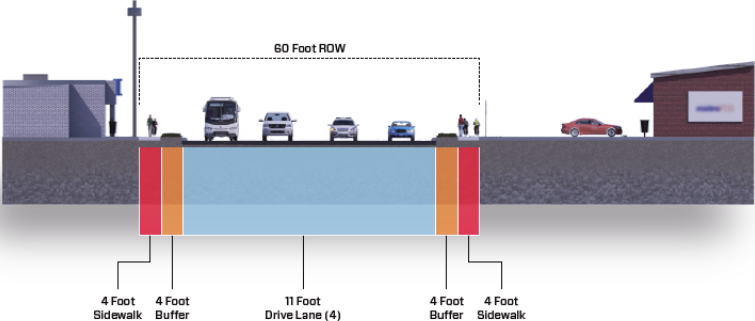


Project Timeline

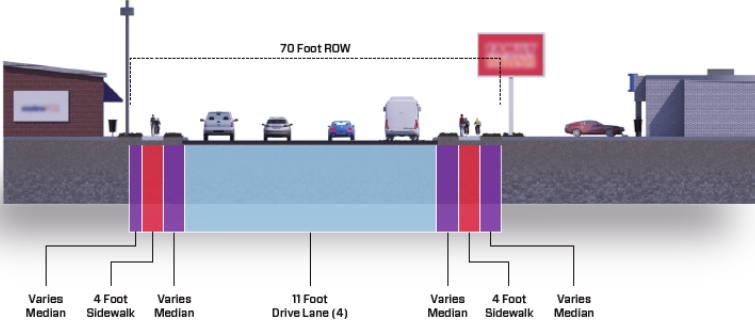




DURHAM DRIVE (EXISTING)



SHEPHERD DRIVE (EXISTING)



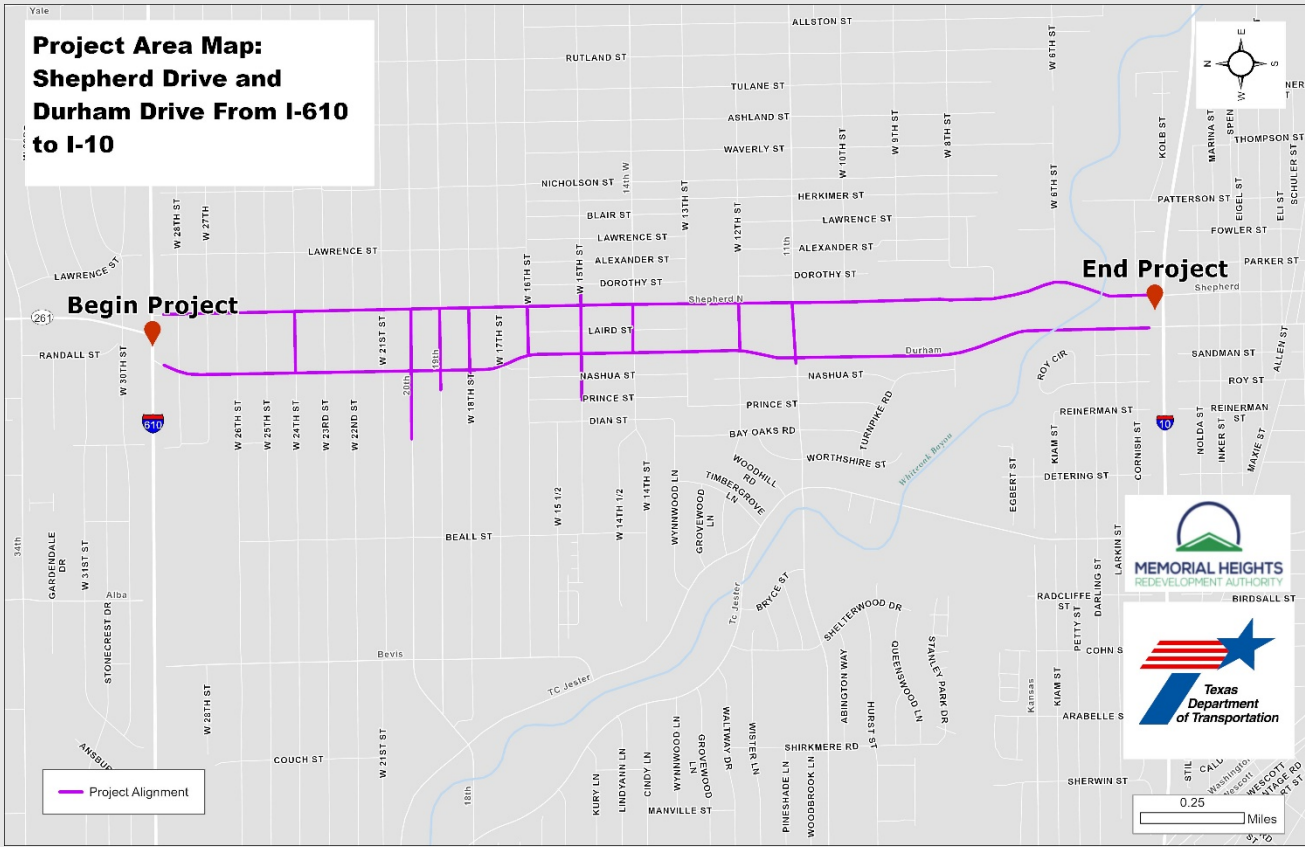
PROJECT OVERVIEW



Location
Harris County

Limits
From I-610 to I-10

Corridor Length
2.4 miles



WHY ARE IMPROVEMENTS NEEDED?

- Project Need:
 - High crash rate
 - Roadway is in serious disrepair/no significant roadway improvements since the 1950s
 - Lack of multi-modal and regional access
 - Flooding
 - Congestion
- Project Purpose:
 - The purpose of this project is to address regional priorities related to safety, state of good repair, multimodal access, stormwater mitigation and congestion relief



2040 LEVEL OF SERVICE – EXISTING CONFIGURATION

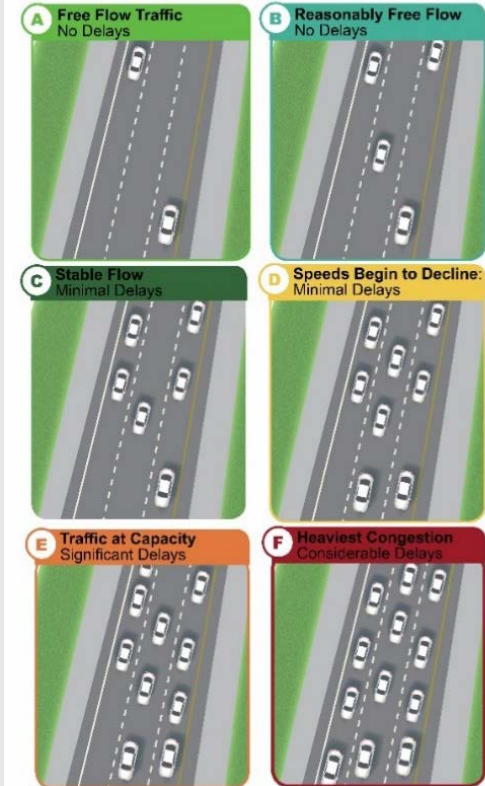


Capacity Analysis – 2040 Projected Conditions

Intersection	AM Peak Hour (LOS (delay))					PM Peak Hour (LOS (delay))				
	EB	WB	NB	SB	Int	EB	WB	NB	SB	Int
Signalized Intersections*										
Shepherd Drive at W 20 th St	C (29.9)	D (37.3)	A (8.8)		B (18.1)	D (59.1)	D (36.7)	B (12.2)		C (20.9)
Durham Drive at W 20 th St	C (30.1)	E (58.5)		C (20.3)	C (25.3)	C (23.6)	F (97.4)		B (18.9)	C (30.2)
Shepherd Drive at W 11 th St	D (36.8)	F (146.4)	C (22.3)		E (63.4)	E (56.0)	F (121.0)	E (77.0)		E (79.7)
Durham Drive at W 11 th St	E (55.6)	D (40.6)		F (111.0)	F (87.3)	D (39.6)	C (29.1)		D (43.9)	D (38.9)

*Signal timing cycle lengths and split timings were optimized

Level of Service Definitions



2040 LEVEL OF SERVICE – PROPOSED CONFIGURATION

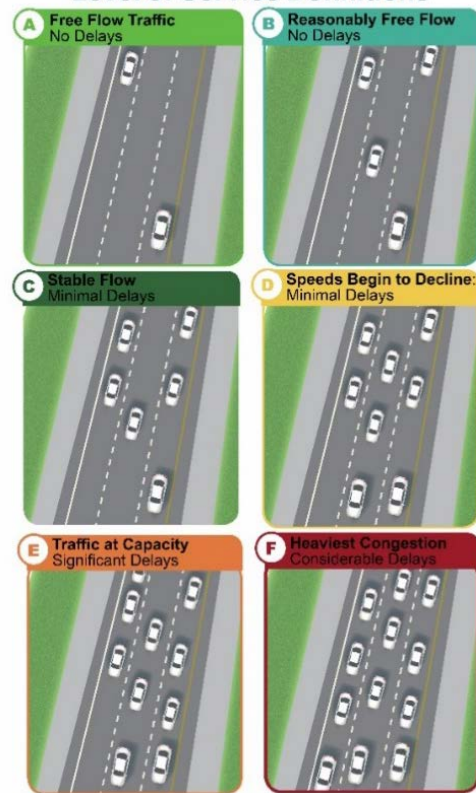
Capacity Analysis – 2040 Projected Conditions - Scenario

Intersection	AM Peak Hour (LOS (delay))					PM Peak Hour (LOS (delay))				
	EB	WB	NB	SB	Int	EB	WB	NB	SB	Int
Signalized Intersections*										
Shepherd Drive at W 20 th St	D (45.4)	D (37.3)	A (9.8)		C (21.1)	D (35.5)	D (36.7)	C (29.4)		C (31.2)
Durham Drive at W 20 th St	D (46.3)	D (40.3)		C (30.6)	C (32.8)	D (50.5)	D (42.3)		C (23.3)	C (30.5)
Shepherd Drive at W 11 th St	C (31.5)	D (53.9)	C (23.3)		C (34.6)	D (49.0)	E (60.8)	D (54.6)		D (54.3)
Durham Drive at W 11 th St	D (54.9)	D (48.8)		D (48.3)	D (49.6)	D (54.8)	C (33.4)		C (29.4)	D (37.9)

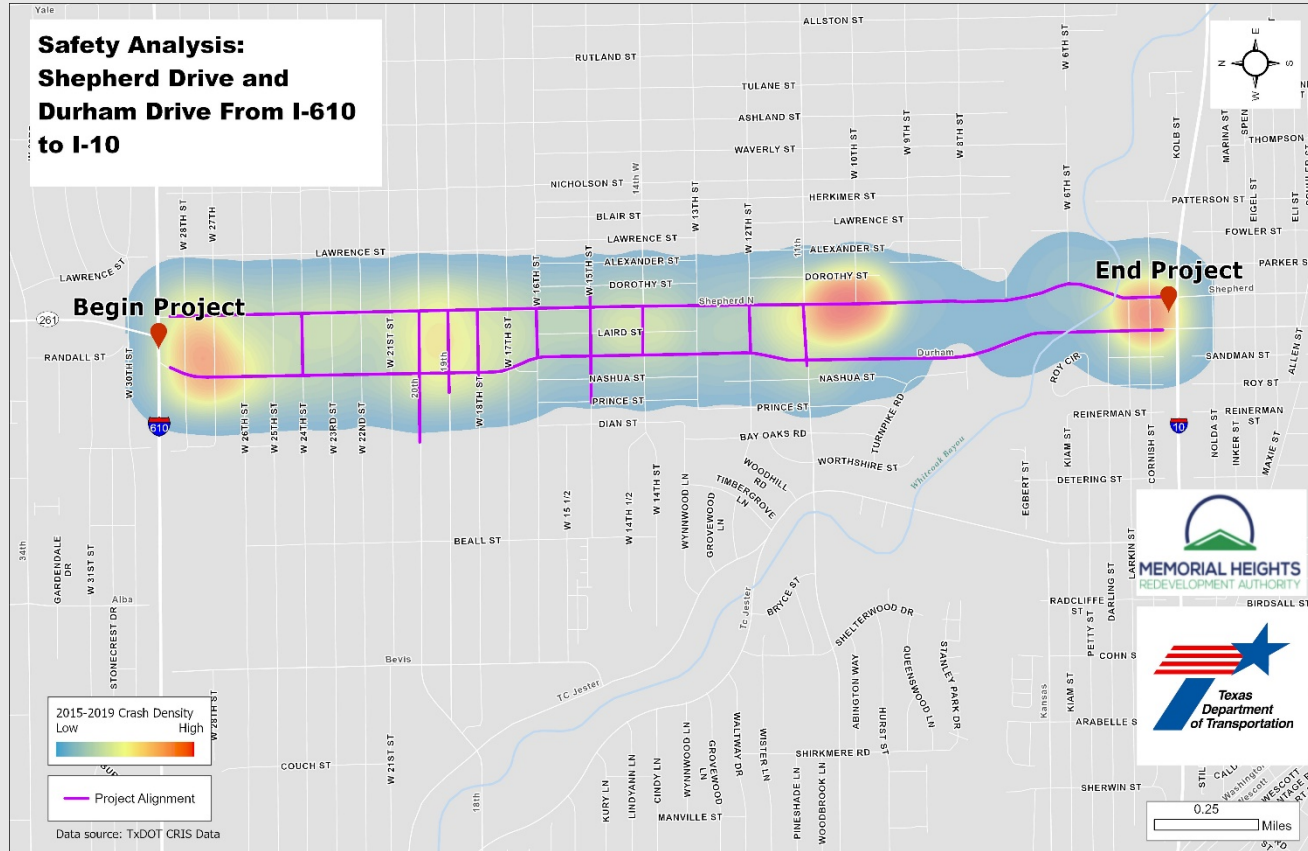
*Signal timing cycle lengths and split timings were optimized



Level of Service Definitions



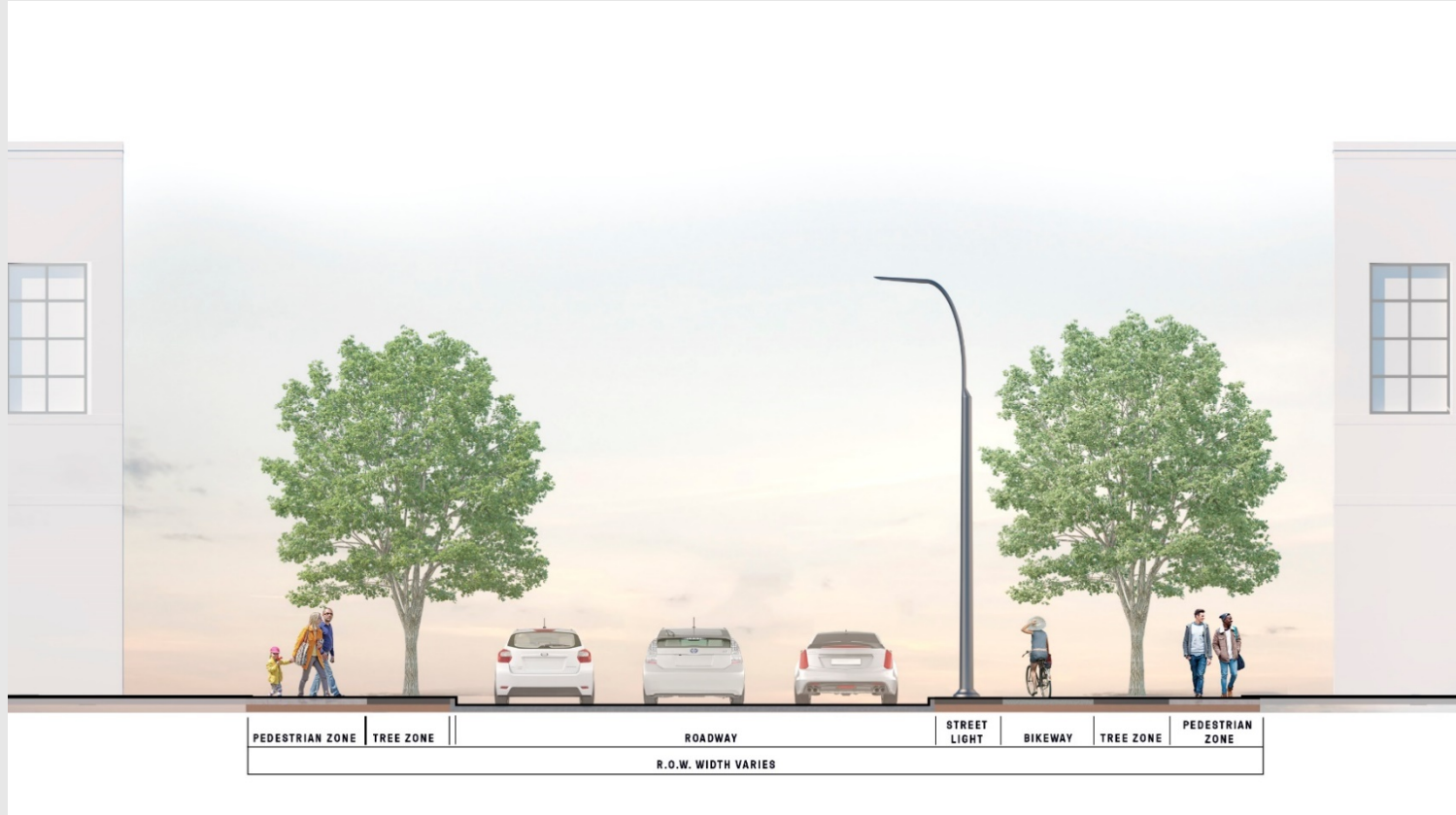
CRASH ANALYSIS (2015 - 2019)



Proposed improvements to Shepherd and Durham:

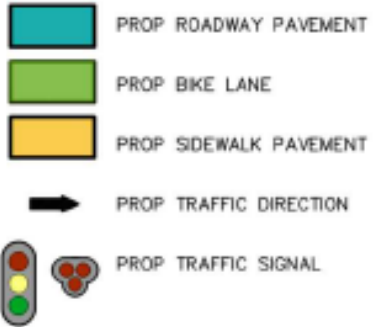
- Modernize the roadway and reduce the number of through lanes from four to three
- Construct pedestrian and bicycle facilities
- Install new traffic signals
- Install landscaping
- Install signage and crosswalk striping
- Construct stormwater improvements
- Replace and upgrade sanitary and water lines

PROPOSED TYPICAL SECTION



PROPOSED SCHEMATIC LEGEND

LEGEND



PROPOSED BICYCLE AND PEDESTRIAN ACCOMMODATIONS

- Six- to ten-foot-wide sidewalks on both sides of Shepherd and Durham (width varies depending on available space)
- Sidewalks on cross streets
- Six-foot-wide bike lanes behind the curb on the east side of both Shepherd and Durham Drives
- New traffic signals
- Signage and crosswalk striping



EVALUATION OF BUILD ALTERNATIVES



	Property Impacts	ROW Cost	Construction Timeline	Mitigation	Construction Cost	Connectivity	Bike	Transit	Urban Design/ Landscaping
Alternative 1 Cycle Track on Shepherd	Acquisition required for all options	\$300,000 for all options	Five years for all options	Mitigation required for all options	\$117 million	Improved connections to trails	Improved safety	Fewer conflicts between buses and bicycles	More conducive to mixed-use environment; more space for landscaping
Alternative 2 Bike Lanes on Outside of Shepherd and Durham					\$115 million	Improved access to transit, bike, ped, community resources	Improved safety	Access between buses, bikes, and pedestrians more direct	Potential for redevelopment on the edges of corridor
Alternative 3 Bike Lanes on Inside of Shepherd and Durham					\$115 million	Improved access to the interior of the project corridor	Improved access	Fewer conflicts between buses and bikes	Potential for redevelopment between Shepherd and Durham
Alternative 4 Bike Lanes on East Side of Shepherd and Durham					\$115 million	Improved access to transit, bike, ped, community resources, highways; improved access to trails	Improved safety	Improved access	Potential for redevelopment on the edges of Shepherd and the interior of Durham

- The proposed project is consistent with Houston-Galveston Area Council's long-range transportation plan:
 - Regional Transportation Plan 2045
 - FY 2021-2024 Transportation Improvement Program

- Total Project Estimated Cost: approximately \$115 million

ENVIRONMENTAL OVERVIEW



- Biological Resources including Threatened and Endangered Species and Habitat
- Community Impacts
- Water Resources
- Hazardous Materials
- Archeological Resources
- Non-Archeological Historic Properties
- 4(f) Resources (parks and recreation areas)

No adverse impacts are anticipated to species or habitats



No adverse impacts are anticipated to community resources

- Minor access changes
 - Modified driveway access would reduce conflicts and retain property access
- Addition of dedicated bicycle lanes
- Addition/replacement of sidewalks
- Addition of landscaping
- Approximately 0.046 acres of additional right of way would be required
- Displacements are not anticipated
- Disproportionately high and adverse impacts to Limited English Proficiency (LEP) and minority populations are not anticipated
- Increased safety and mobility

No adverse impacts are anticipated to Water Resources

- The project area crosses White Oak Bayou (a wetland and Water of the U.S.)
- The southern end of the proposed project is in the 100-year flood zone



City of Houston designated the proposed project corridor as a Potentially Petroleum Contaminated Area (PPCA)

- Two Recognized Environmental Conditions
- 18 Historic Recognized Environmental Conditions
- 17 Historic Recognized Environmental Condition “areas”



No adverse impacts to archeological resources are anticipated

- No archeological sites, known cemeteries, or other indicators of the presence of archeological resources were identified within 150 feet of project's area of potential effects
- There is a historically-reliable water source within 500 feet of the project's area of potential effects (White Oak Bayou)

No adverse impacts to non-archeological historic properties are anticipated

- Northern portion of project is located within the National Register Houston Heights Multiple Resource Area
- Over 250 properties potentially eligible as historic are within the 150-foot Area of Potential Effects
- No designated historic properties are located within the 150-foot Area of Potential Effects

No adverse impacts are anticipated to 4(f) resources

- Trail connection at White Oak Bayou Bike Path
- 4(f) exception being considered by the Houston Parks and Recreation Department



- Approximately 0.046 acres of additional right of way would be required for the proposed project
- “Corner clips”
 - 810 square feet at SW corner of Shepherd at West 20th
 - 460 square feet at NE corner of Durham at West 19th
 - 730 square feet at NE corner of Durham at West 11th
- No impacts to structures/displacements

PROJECT SCHEDULE



We are here



Virtual public hearing materials are provided on the MHRA website:

- Recorded Virtual public hearing presentation in English and Spanish
- Exhibit boards
- Comment card in English and Spanish
- Fact sheet in English and Spanish
- Proposed schematic
- Environmental constraints map
- Environmental technical reports

PUBLIC COMMENT PERIOD

JANUARY 14, 2021 – JANUARY 29, 2021



All comments must be received or postmarked by **January 29, 2021**

Comment Card

Download the comment card from the website, fill it out, and send to MHRA

By Email

Submit to:
Comments@memorialheightstirz5.com

By Mail

MHRA
1980 Post Oak Blvd., Suite 1380
Houston, TX 77056

By Voicemail

(832) 429-6237

Online

memorialheightstirz5.com/projects/shepherd-and-durham-major-investment-project



MHRA

Sherry Weesner, President MHRA/TIRZ 5

832-429-6237

Sherry@memorialheightstirz5.com

Project web site:

memorialheightstirz5.com/projects/shepherd-and-durham-major-investment-project



**Thank you for participating in
this virtual public hearing**

**Please remember to submit comments by
January 29, 2021**