



Shepherd Drive, Durham Drive, and Selected Cross Streets Reconstruction Project Construction Progress Update September 22, 2022

Matt Kainer, P.E.



PROJECT OVERVIEW



- Shepherd Dr. & Durham Dr. from 15th St. – IH-610
- Includes 15th, 16th, 18th, 19th, 20th, & 24th St.
- SER Construction Partners, LLC
- \$50,431,020.89



PROJECT OVERVIEW



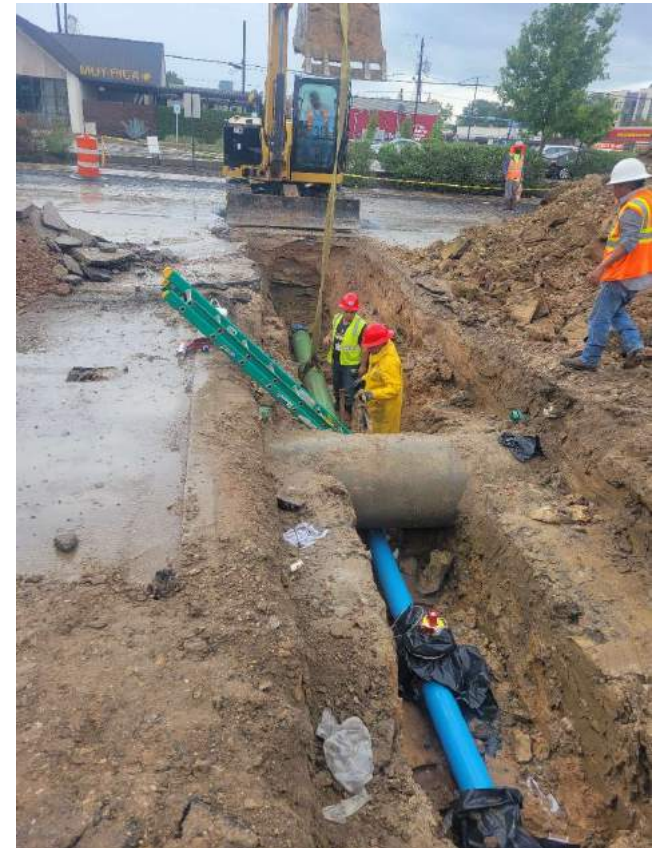
- Notice to Proceed: April 18, 2022
- 1,008 Calendar Days (~33 Months)
- CEI Team – CDM Smith, Quiddity (formerly Jones | Carter), McDonough Engineering, and Geotest Engineering

PROJECT PROGRESS



QUIDDITY
ENGINEERING

- Project is fully underway
- Work occurring on Shepherd, Durham, & cross-streets
- Project website updated weekly
- Utility adjustments in progress



PROJECT PROGRESS



~4,100 LF of Water Main



~750 LF of Sanitary Sewer



PROJECT PROGRESS



QUIDDITY
ENGINEERING

~1,500 LF of Storm Sewer



~33 Storm Sewer Inlets & Manholes



PROJECT PROGRESS



QUIDDITY
ENGINEERING

~350 SY of Pavement



PROJECT CHALLENGES - UTILITIES



QUIDDITY
ENGINEERING

- CenterPoint Electric – overhead power poles
- CenterPoint Gas – 6” IP line under Shepherd
- AT&T, Verizon/MCI, Crown Castle, & Comcast



UPCOMING ACTIVITIES



QUIDDITY
ENGINEERING

- Shepherd & Durham water main installation
- Storm sewer and inlet installation
- Pavement demolition and replacement



Pavement Demolition on Shepherd



66" Storm Sewer on W 20th St.


MEMORIAL HEIGHTS
REDEVELOPMENT AUTHORITY

**CDM
Smith**


QUIDDITY
ENGINEERING



Wet Connect of New Water Main



Storm Sewer Manhole & Inlet Construction





QUIDDITY
ENGINEERING



MEMORIAL HEIGHTS
REDEVELOPMENT AUTHORITY

CDM
Smith

QUESTIONS?

www.ShepherdDurham.com